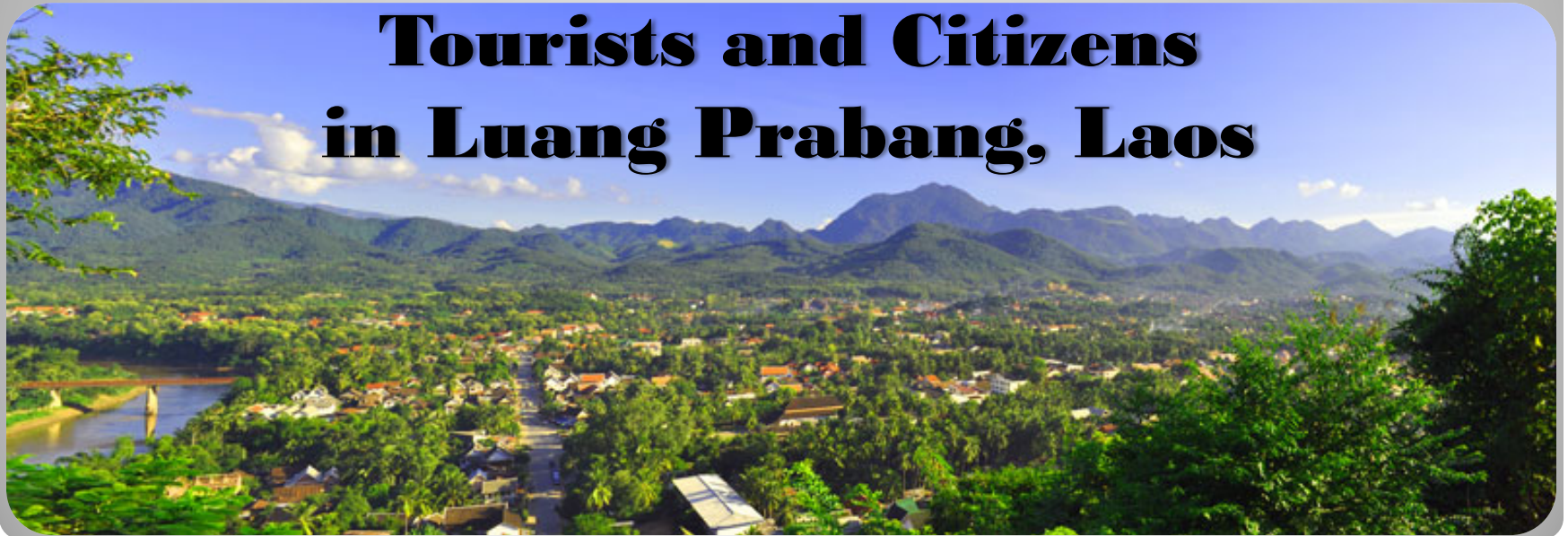


Welcome to Luang Prabang World Heritage Town

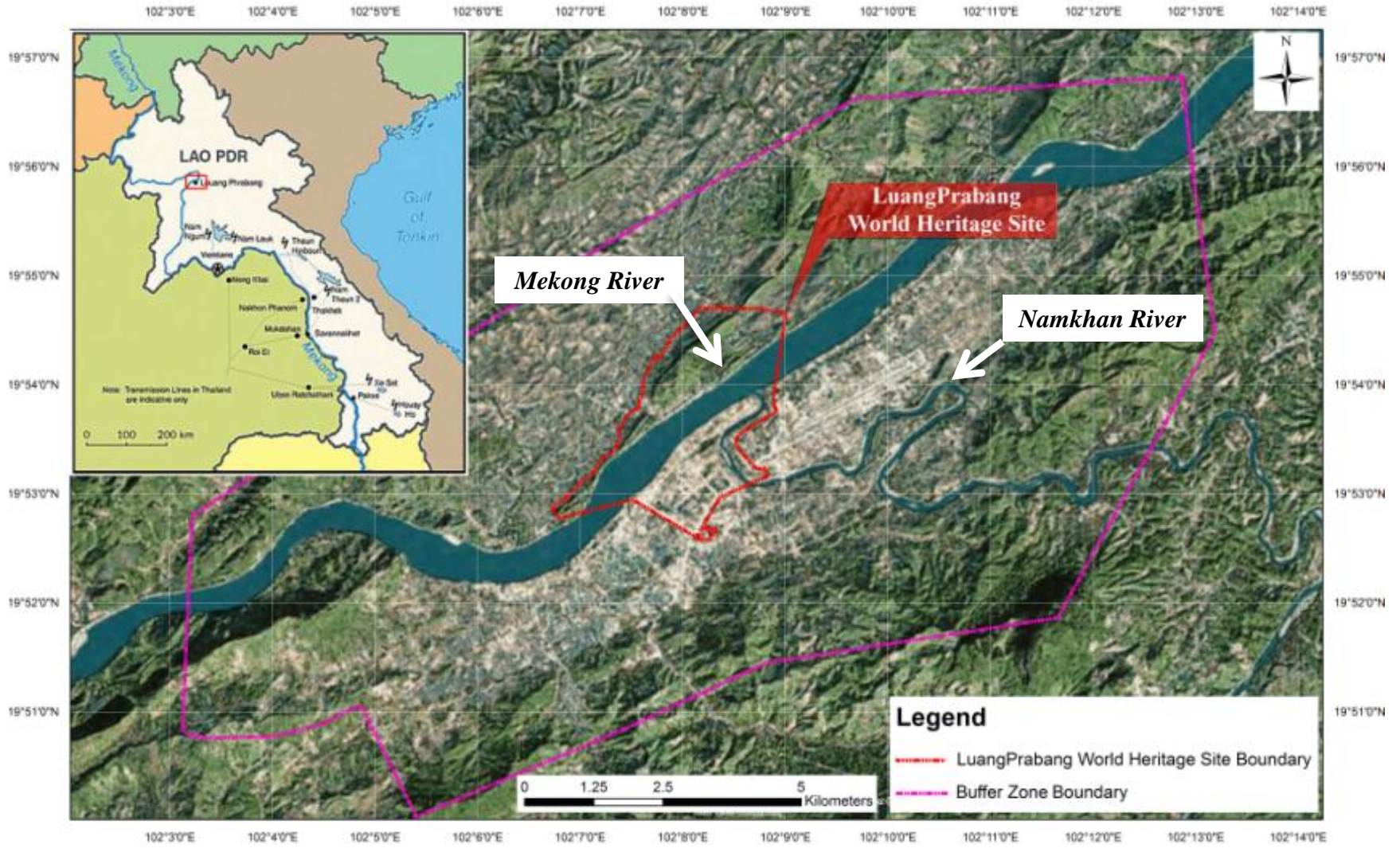


Public Green Spaces and Parks for Tourists and Citizens in Luang Prabang, Laos



Prepared by: Urban Development and Administration Authority (UDAA), Luang Prabang, Laos

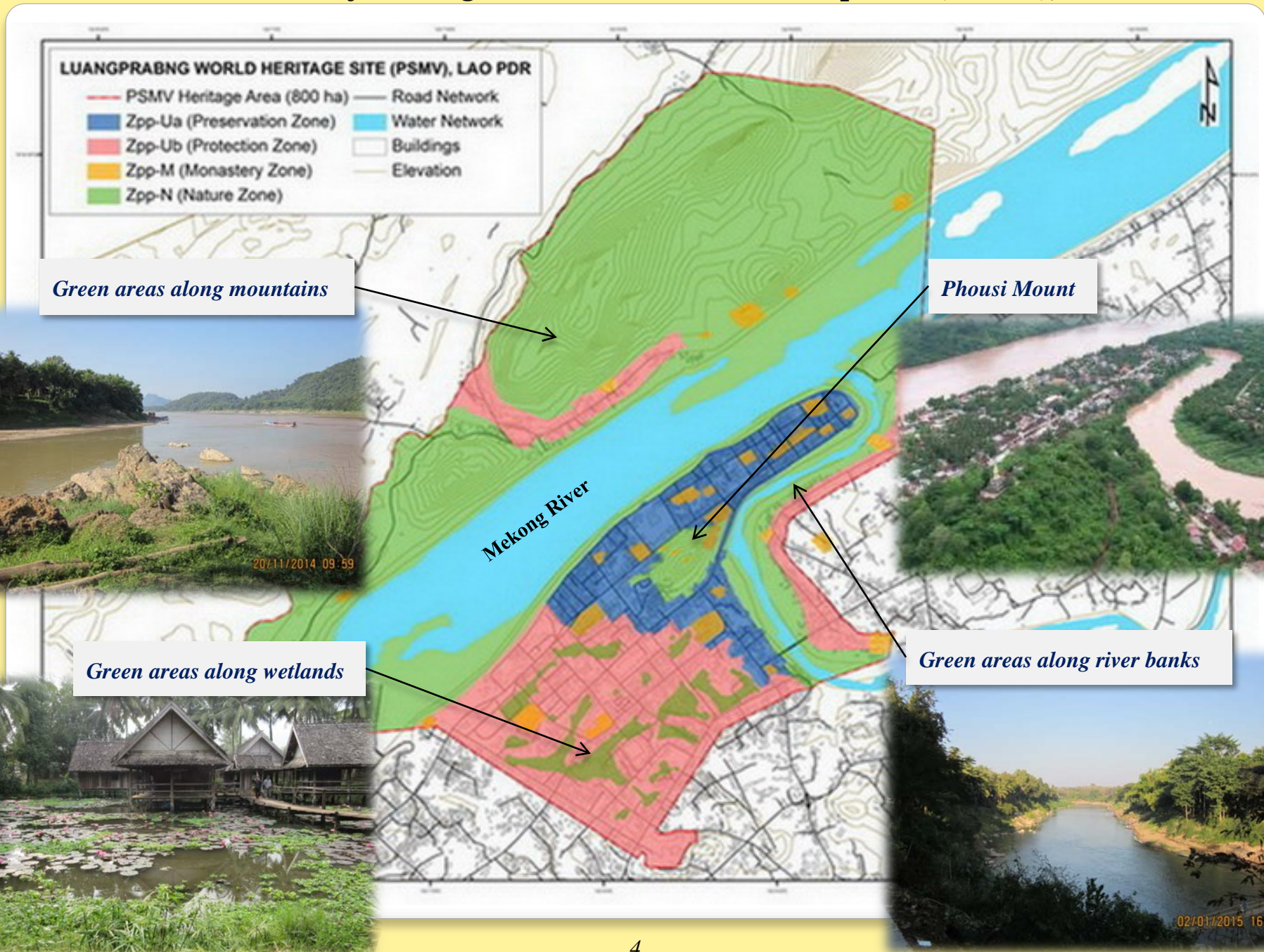
Luang Prabang World Heritage Site



***The Existing of
Public Green Spaces and Parks for
Tourists and Citizens***

Prepared by: Urban Development and Administration Authority (UDAA), Luang Prabang, Laos

Master Plan of Heritage Preservation and Development (PSMV), 2001



Master Plan of Buffer Zone, 2012

Green areas of mountains around city

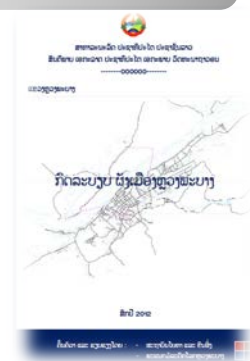
20/11/2014 09:59



Green areas of agricultural fields

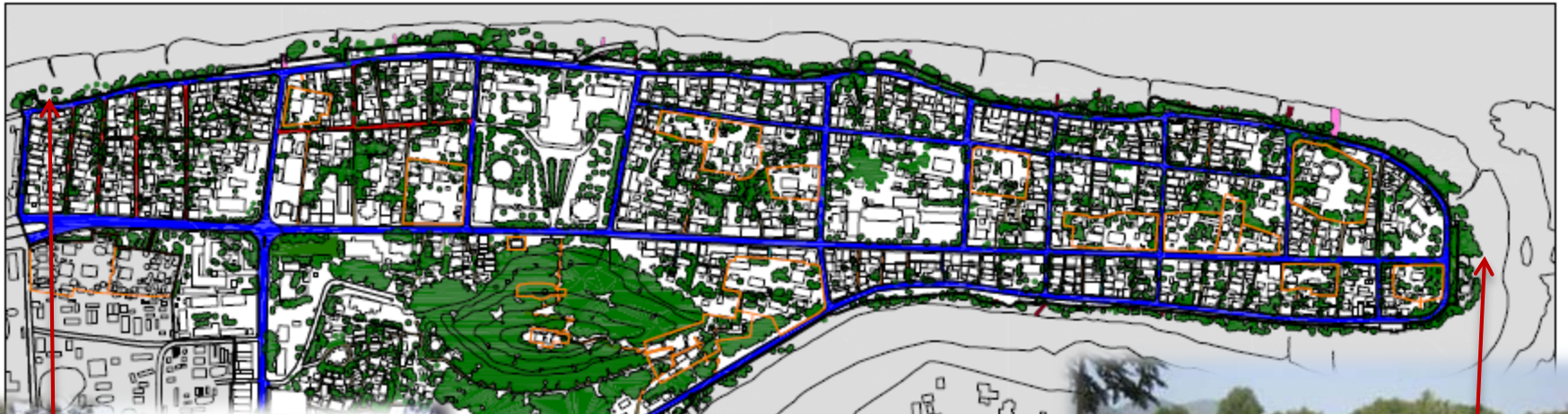
02/01/2015 16:34

Design and Maintenance and Challenges faced regarding Public Green Spaces and Parks for Tourists and Citizens

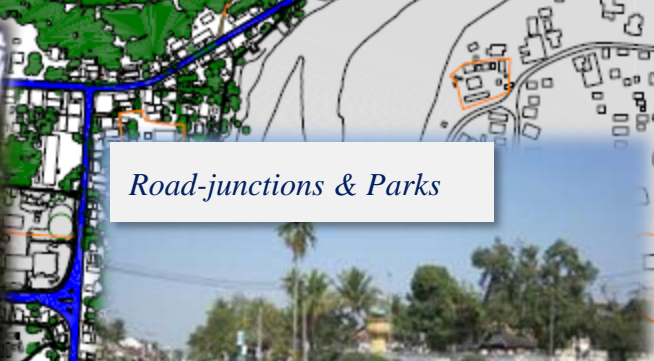


Prepared by: Urban Development and Administration Authority (UDAA), Luang Prabang, Laos

Green Spaces in the City



Small Public Park



Road-junctions & Parks



Temples & Trees



Small Public Park

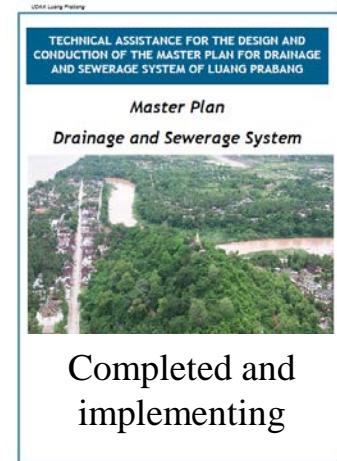


Small Public Park

ASEAN ESC Model Cities Programme Activities

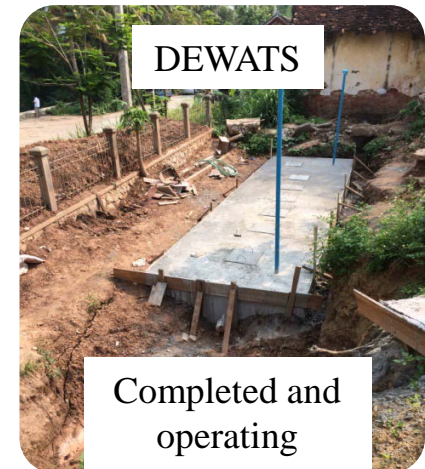
Wastewater

- Master plan for Urban Drainage and Sewerage System in Luang Prabang Municipality Year 2012-2037, funded by French Agency for Development (AFD).
- Decentralized Wastewater Treatment Solutions (DEWATS), 2014/15, funded by Institute for Global Environmental Strategies (IGES).



Solid waste

- LPPE project for : On-site composting activity, Eco-Basket activity, and 3Rs activity. Funded by Japan International Cooperation Agency (JICA).



Problems and Challenges faced

Finance

- Limitation of finance for construction/improvement work
- Lack of cost for operation /maintenance work
- Lack of sustainability of the invested protects

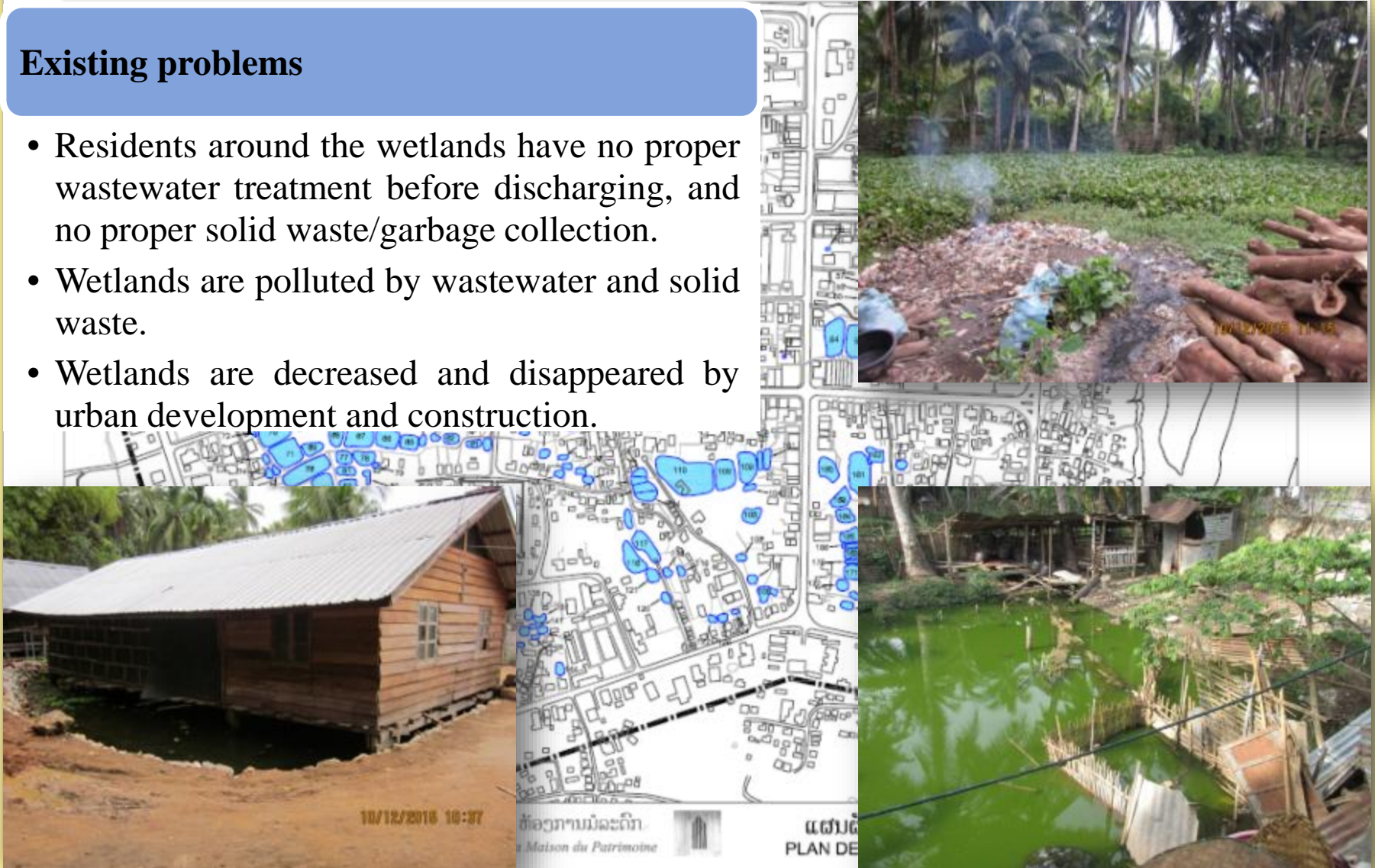
Wetlands

- Maintenance (protection) of wetlands/ponds is the most challenge faced in maintain green spaces.

Problems faced in Maintaining Wetlands registered as world heritage property

Existing problems

- Residents around the wetlands have no proper wastewater treatment before discharging, and no proper solid waste/garbage collection.
- Wetlands are polluted by wastewater and solid waste.
- Wetlands are decreased and disappeared by urban development and construction.



Planning to Maintain the Wetlands

Specific Objectives

- To improve the wetland's water environment while maintaining its biodiversity;
- To recover the wetland's functions in wastewater and stormwater treatments;
- To preserve the world heritage properties together with environmental sustainable development;
- To create public green parks for society, tourism and environment.

Intervened Activities

- Recover 33 wetlands in which 7 ponds will be used for treating wastewater as wetland system;
- Improve two main drains through the wetland area to prevent flooding event;
- Construct accessed walk-way to accessible monitoring and maintenance works;
- Construct eight DEWATS units and engage improvement of septic tank system and construction of grease trap/disposal system in every buildings around the wetland areas

Planning to Maintain the Wetlands

Required supports/cooperation

- Financial support (especially from international organizations) for construction, operation and maintenance works;
- Expertise assistant in construction, operation and maintenance works;
- Cooperation from residents (particularly citizens living around the wetland area) in contribution and participation in construction, operation and maintenance works.

Strategies
to promote public green spaces and parks
both for citizen well-being as well as for tourism

- 1) Promote the public-private partnership (PPP) in preservation and protection of the world heritage site together with environmental protection and convenient-infrastructure improvement
- 2) Improve Luang Prabang into a refreshing, attractive "City Park" in a quality environment.
- 3) Preserve natural resources and ecosystem linked to tourism.